

## DM2 Technomat H-16/55

Unbeatable precise  
performance and speed



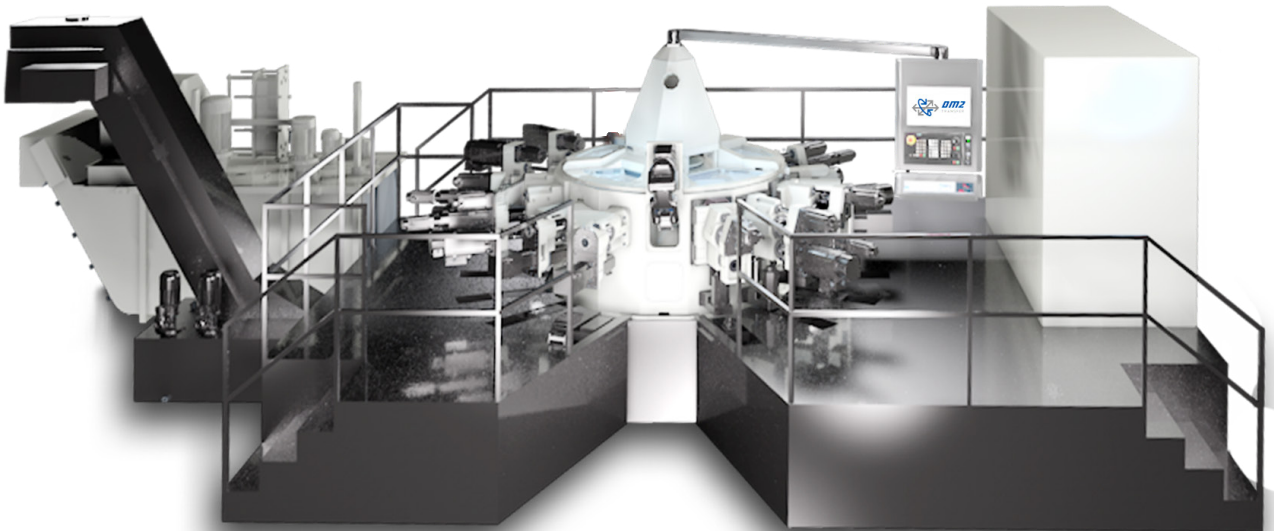
## DM2 Technomat H-16/55

Unbeatable precise performance and speed

The DM2 Technomat H-16/55 is a high-performance, up to 16-station rotary transfer machine designed for maximum precision and productivity. With 14 machining stations and a dedicated part-turnover station, the rotary transfer machine delivers exceptional accuracy, speed, and flexibility.

Engineered for high-volume production and performance machining, the Technomat H-16/55 is the go-to transfer machine for manufacturers across sectors like automotive, petrochemical, and hydraulics.

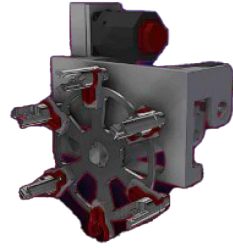
## DM2 Technomat H-16/55



## Key Features

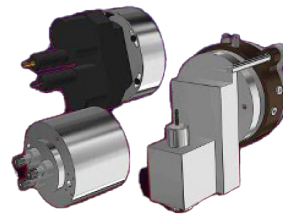
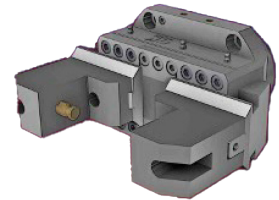
Up to 16 stations, up to 21 machining units, and a single part-turnover unit.

- CNC units 1-2-3-4 axes
- Horizontal and also vertical position
- Drilling, tapping, threading, milling, deburring
- Standard collets 32-55mm
- Two jaw self centering chucks
- Barfeeders and cutoff unit
- Part turn-over units
- Milling heads
- Multispindle heads
- HSK quick change head
- Tool changers
- Fanuc or Siemens control
- Mikron miTool, The next level of tool monitoring
- Laser safety guards
- Cooling, water or oil



Tool changers

Two jaw self centering chucks



Milling and multispindle heads



# DM2 Technomat H-16/55

## Main Markets and Materials

The Technomat is designed to handle a wide variety of components, making it a highly versatile solution for different production needs. It can efficiently machine parts made from materials such as brass, aluminum, carbon steel, and stainless steel, ensuring excellent performance across a broad range of applications.

This flexibility makes the machine particularly suitable for industries such as hydraulics, petrochemical, and automotive, where different materials and component specifications are often required within the same production environment.

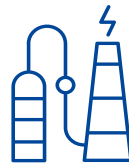
In addition, the Technomat is capable of accommodating a wide range of part dimensions, allowing manufacturers to process both small and medium-sized components with high precision and consistency. Its adaptability enables seamless transitions between different production batches, helping to reduce setup times and improve overall product

## Main Markets

Automotive



Petrochemical



Hydraulic



Data Center

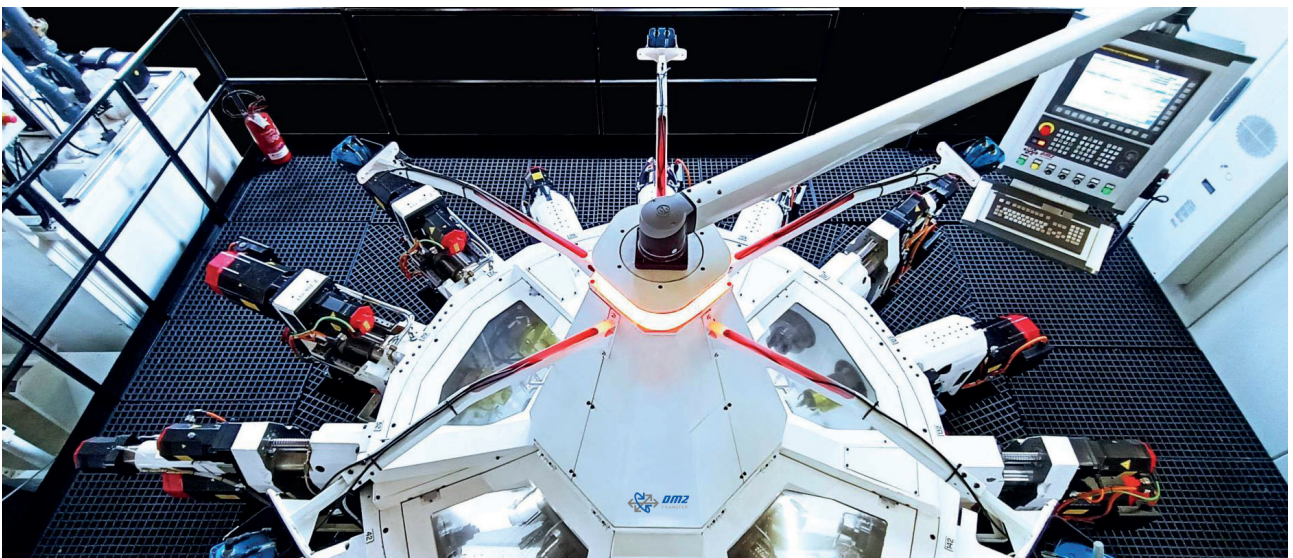


## Materials

- Stainless Steel
- Steel
- Brass
- Aluminium

## Max part size

- $\varnothing$  55 / L120mm



# DM2 Technomat H-16/55

Application samples



# DM2 Technomat H-16/55

## Loading / Unloading

The Technomat offers a high level of flexibility when it comes to part loading, allowing it to be easily integrated into different production setups. It can be loaded with forged components using a robot, lift/tipper systems, or conveyor belts, ensuring efficient and automated material handling. Alternatively, the machine can be equipped with a bar feeder and cutoff unit, making it suitable for processing bar stock with the same level of precision and productivity.

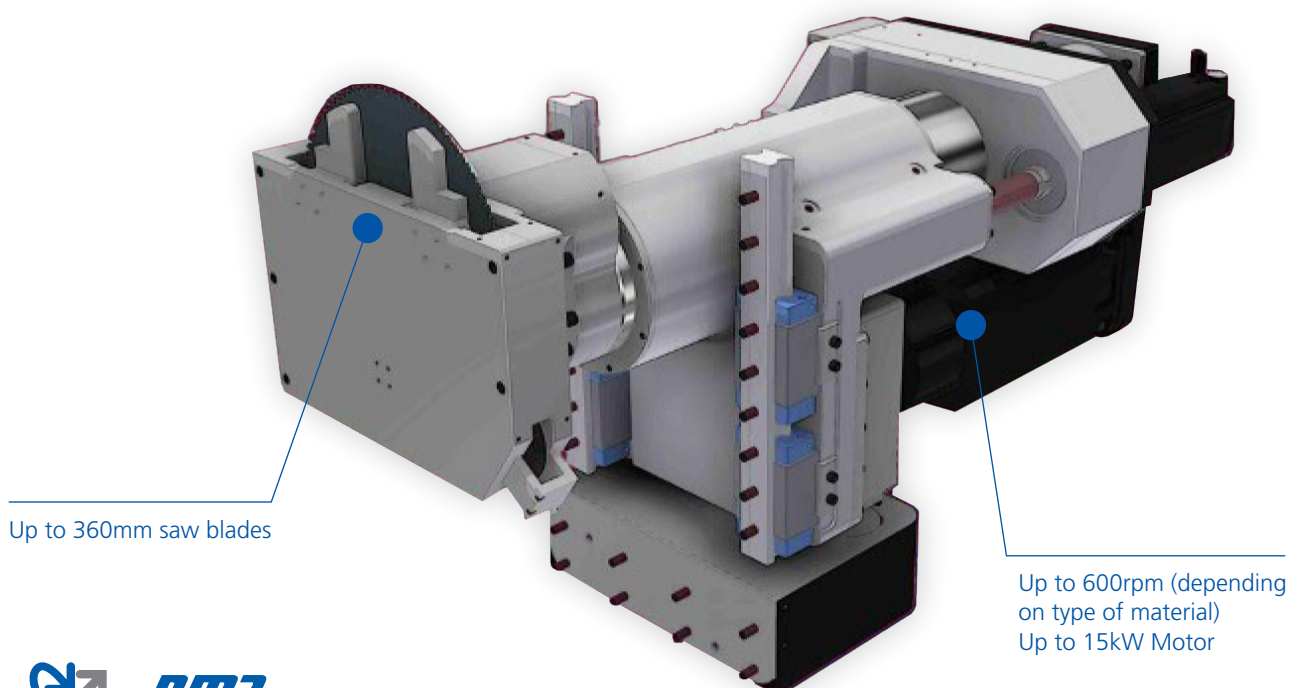
The cutoff unit is designed to deliver reliable and consistent performance, even in demanding conditions. It can accommodate saw blades of up to 360 mm in diameter and operate at speeds of up to 600 rpm, depending on the type of material being processed. The system is powered by a motor with up to 15 kW, providing the strength and stability required for accurate and efficient cutting operations.

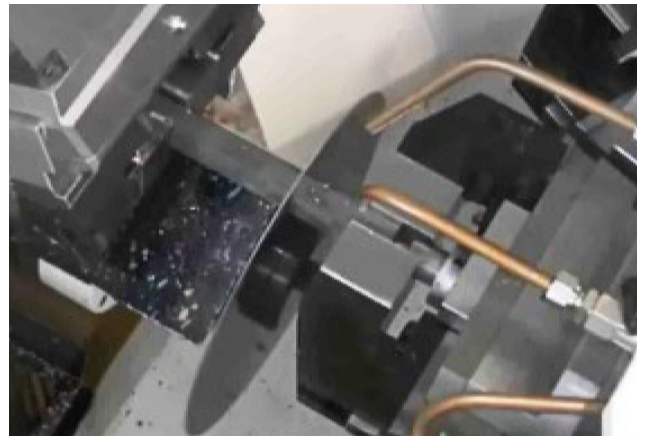
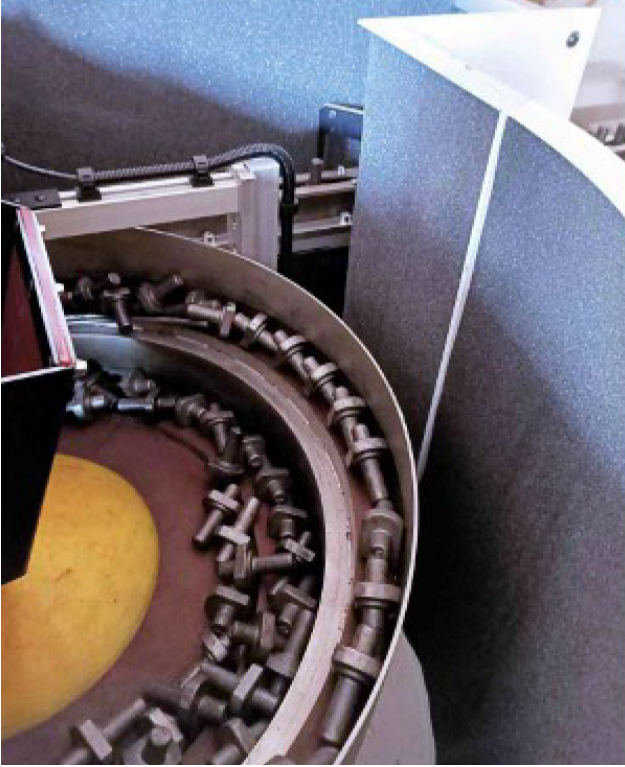
This combination of loading options and cutting capabilities makes the Technomat a versatile solution, capable of adapting to different production requirements while maintaining high efficiency and process reliability.

### Loading options during machining with

- 3-axis handling
- Robot
- Manual variable part loading and unloading
- Lift / tipper and conveyor belt
- Barfeeder and cutoff unit

### Cutoff unit





# DM2 Technomat H-16/55

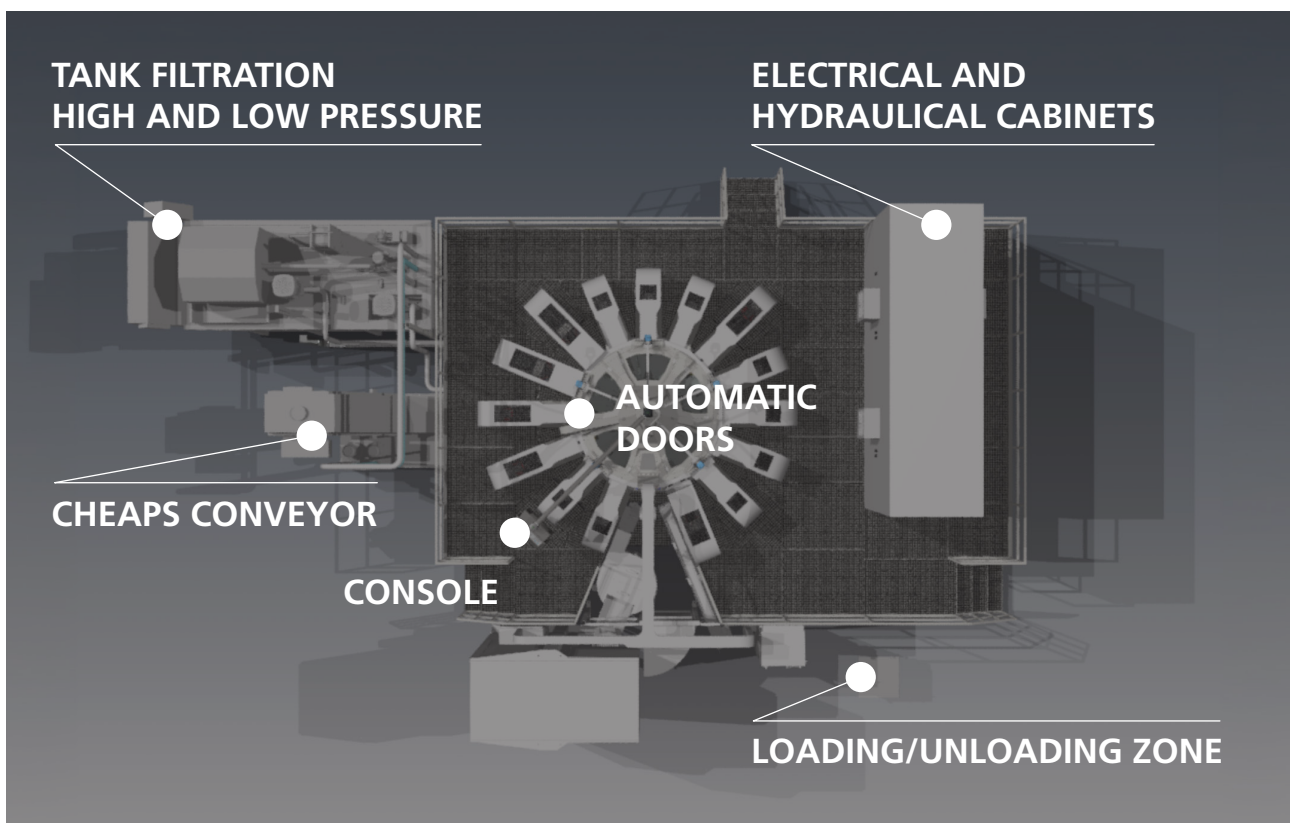
## Layout

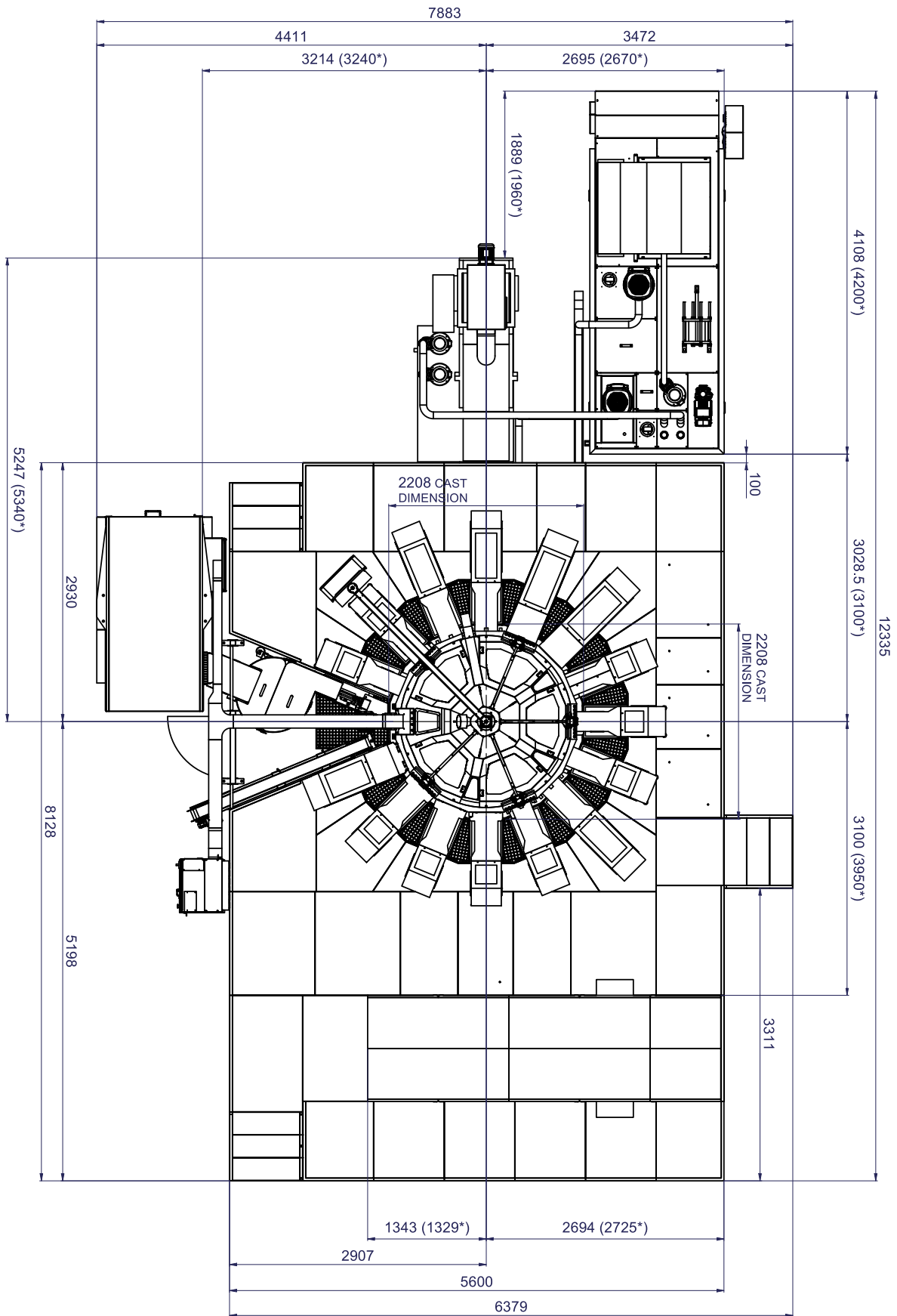
The machine features a compact and well-organized layout designed to optimize both space and usability. A raised platform provides convenient access to all main units as well as to the electrical panel, allowing operators to carry out inspections and maintenance activities efficiently and safely.

All pipes and connections are routed beneath the footboards, keeping the upper working area clear and free of obstacles. This design choice creates a more comfortable and secure environment for operators, reducing the risk of accidents and making movement around the machine easier.

The robot area is accessible directly from ground level through a dedicated safety door, ensuring both ease of access and compliance with safety requirements. This separation of zones allows operators to interact with different parts of the machine in a controlled and protected manner.

In addition, automatic doors located on the upper section of the machine bases provide quick and practical access to the internal components. This facilitates routine checks, adjustments, and maintenance operations, helping to minimize downtime and improve overall operational efficiency.





# DM2 Technomat H-16/55

## Technical data

### Machine

Number of stations		8-16
Max. number of machining units upper / lower, lateral		7/0/14
Number of clamping fixtures		8/16
Table position repeatability	°	± 1"
Table indexing time (15°)	sec	1
Max workpiece dimension (ø / L)	mm	ø 55 / L120

### Clamping devices

Max clamping with 2 jaws chuck /Max clamping with haimbuck collet	mm	ø-SW 55 / ø55
---	----	---------------

### Machining units

Single axis (vertical)	mm	-
Z axis stroke	mm	120
CNC 2 axes horizontal machining unit		-
Z axis stroke / X Working capability	mm	120 / 20
CNC 3 axes machining unit; standard version upper & radial	mm	
X / Y / Z axis stroke	mm	50 / 50 / 120
RPM	1/min	35000
Nm at 10000 RPM	Nm	7.2
Max Torque	Nm	13
Recess machining unit:		
Z / U axis stroke	mm	120 / 12-18
RPM	1/min	4000
Nm at 4000 RPM	Nm	17
Max Torque	Nm	50

### CNC, User interface

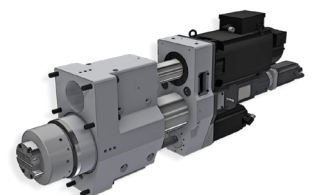
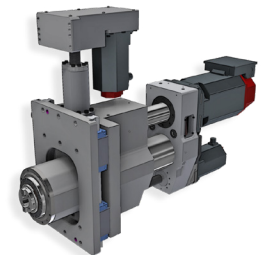
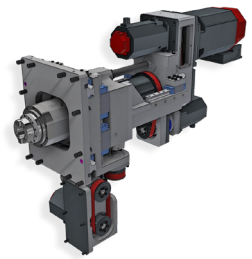
Control system	Siemens- Fanuc
HMI Human - Machine Interface	DM2 / Mikron
Simple management of programs & tool compensation; Self-explanatory graphics; Maintenance activities schedulation; Remote diagnostic; Several languages. Integrated statistical analysis	

### Machining spindles

ø Spindles	mm	ø 50 / ø 60 / ø 70 / ø 80	
Tool Holder		HSK40- HSK50 - HSK63	
Active tool control		Mikron miTool	
Cutting fluid		Net Oil- Water oil	
Vertical & horizontal spindles			
HP version	RPM	1/min	10000
	Nm at 10000 RPM	Nm	7.2
	Max Torque	Nm	13
HS version	RPM	1/min	35000
	Nm at 35000 RPM	Nm	1.1
	Max Torque	Nm	3.9

### Installation

Voltage / frequency / phases	V / Hz	400 / 50 or 60 / 3
Power consumption (ca.)	kW	40 - 80
Pressure of compressed air	bar	6
Approx coolant capacity / type	l	3500 / oil
	l	3500 / water oil
Approx weight of machine	kg	18000 / 20000
Approx layout dimension (L x W x H) (without feedings unit, oil / air filtration systems )	m	12.5x7.8x3.0



# Mikron Digital Solutions

Accelerate your digital journey

Use data, advanced analytics, machine learning and AI to reinvent your manufacturing ecosystem to enable superior outcomes. Mikron Digital Services drive more efficient and sustainable operations, greater productivity, customer relevance and growth.

## miTool

The next level of tool monitoring

### Features

- Tools monitoring system
- Up to 200 real-time monitored channels
- Breakage control and wear detection
- Artificial intelligence algorithms
- End of life prediction and reporting
- Optimized machine stops
- Adaptive control
- Waveforms history database
- Events notification

## miConnector

The machine data connected

### Features

- Machine data gateway
- Data sharing with customer PDA via OPC-UA protocol
- Ready for cloud data exchange, via MQTT protocol
- Security guarantee by data encryption
- Connect directly to your machine controller
- Different protocol available for controller connection
- Optionally collect Input signals (e.g. sensors) from field

## miMachine

The machine life cycle

### Features

- Web based dashboards
- Machine & peripheries status
- Production and reporting (OEE)
- Condition monitoring with notifications
- Failures analysis (pareto)
- Tools life history
- DB for data persistence
- Digital BoM and serial Nr. management
- Back-end integration with Mikron ERP

## miMaintenance

The maintenance by usage

### Features

- Machine maintenance management
- Automated machine expertise for maintenance by usage
- Machine's devices life status and performance
- Real-time condition monitoring
- Anomalies detection and notification
- Artificial intelligence algorithms
- Support for preventive maintenance planning
- Components end of life prediction and reporting
- Back-end integration with Mikron ERP

## miEnergy

The energy consumption management

### Features

- Energy consumption monitoring system
- Machine and peripheries status
- Focus on CO2 footprint reduction
- Different characteristic (current, air, oil, water, waste, temps)
- Anomalies detection
- Machine consumption dashboards, report and data collection
- Adaptive control based on real needs
- Energy consumption improvement replacing old/obsolete parts
- Consulting, redesign and process improvements to reduce waste

## miRemote X

The secured remote platform

### Features

- Secure connection based on OpenVPN standard
- Relies on secured Cloud for performance and security
- Certified process in accordance with IEC 62443-4-1
- Customer is in control to give access to the machine
- Connection reporting and traffic monitoring
- PSIRT (Product Security Incident Response Team) monitors vulnerabilities daily
- Regular security updates of the platform and of the specific devices



## Mikron Machining

**DM2 S.r.l.** a Socio Unico

Via dell'Industria, 16  
25039 Travagliato (BS) - Italia

P.IVA IT-02045130172  
Capitale Sociale € 100.000  
REA BS 288083

Tel +39 030 6863321  
WhatsApp +39 389 2905522  
WeChat +39 389 2905522

dm2.it

A company of **Mikron**

